

KORG Legacy Collection - DIGITAL EDITION

Installation/Setup guide

KORG

Ⓔ ①

Contents of the package

KORG Legacy Collection - DIGITAL EDITION includes the following items. After opening the package, please check to make sure that you have everything. If any items are missing, please contact your dealer.

☐ CD-ROM

- KORG Legacy Collection - DIGITAL EDITION Installation/Setup Guide
- KORG Legacy Collection M1 owner's manual
- KORG Legacy Collection M1 Quick guide
- KORG M1 original owner's manual
- KORG Legacy Collection WAVESTATION owner's manual
- KORG WAVESTATION original owner's manual
- KORG Legacy Collection MDE-X owner's manual

☐ KORG Legacy Collection - DIGITAL EDITION Installation/Setup guide

☐ KORG Legacy Collection - DIGITAL EDITION M1 Quick guide

☐ Software License Agreement

☐ USB Key

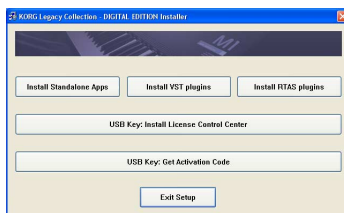
Please note


- All copyrights to the software of this product are the property of Korg Corporation.
- The license agreement for this product is included separately. You must read this license agreement before you install the software. Your installation of the software will be taken to indicate your acceptance of this agreement.
- In order to play the software synthesizer in realtime, you will need to use a low-latency audio interface.
- In order to use the software synthesizer as a plug-in, you will need a host application that supports VST, Audio Units, or RTAS.
- The software of this product is copy-protected. In order to use this product, you will need a computer that can be connected to the Internet, and that also has a USB port.
- If the USB key is damaged, a fee will be charged for repair. Be careful of handling.
- Korg provides no guarantee regarding a lost or stolen USB key. Keep the USB key safe, since you will have to purchase the product again if the key is lost or stolen.
- Apple, the Apple logo, and Mac are registered trademarks of Apple Computer, Inc.
- The Audio Units logo and symbol are trademarks of Apple Computer, Inc.
- Windows XP is a registered trademark of Microsoft Corporation.
- VST and ASIO are registered trademarks of Steinberg Media Technologies GmbH.
- RTAS is a registered trademark of Avid Technology, Inc. and of its affiliates and divisions.
- Other product names and company names are trademarks or registered trademarks of their respective owners.

Installation in Windows XP

To install the software in Windows XP, be sure that your computer is connected to the Internet and proceed as follows.

- 1 Insert the CD-ROM into the CD drive. Normally, the CD will start automatically, and the KORG Legacy Collection - DIGITAL EDITION installation screen will appear. If you have made settings on your computer so that the CD does not start automatically, navigate to the CD-ROM and double-click "Setup.exe."
- 2 Click the install button to specify the format in which you want to use the program (stand-alone, VST, or RTAS). Follow the on-screen instructions to proceed with the installation. Repeat this step if you want to install the program in more than one format.
- 3 Click [USB Key: Install License Control Center], and select the language that you would like to use during the installation. The License Control Center installation screen will appear. Proceed with the installation as directed by the on-screen instructions.
- 4 When you've finished installing the program, click [USB Key: Get Activation Code]. Your web browser will start up, and will access "KORG USER NET," a dedicated website for users.
- 5 When your web browser has finished accessing the "KORG USER NET" user website, a log-in screen will appear. If this is the first time you are registering as a user, click "New user." If you have already registered, type your e-mail address and password, and click "Register another product."
- 6 As directed by the on-screen instructions, enter your user information and product information. The e-mail address and password you use for user registration will be required when you log on to the Korg user website to download software updates. Be sure to write them down so that you won't forget them. In the "Product Code" field of the product information area, type the "Product Code" that's affixed to the CD-ROM case. You should carefully keep the Product Code that's affixed to the CD-ROM case, since you'll need it in order to receive support service.
- 7 When registration is complete, an activation code for your USB key will appear in the screen. Carefully write down this code. This activation code will also be sent to you via e-mail when registration is completed.
- 8 Close your web browser, and click [Exit Setup] to close the installer.
- 9 Connect the USB key to the USB port. The "Found New Hardware Wizard" appears, choose [Install software automatically] and click [Next]. when the USB key has been installed, click [Finish] to close the wizard.

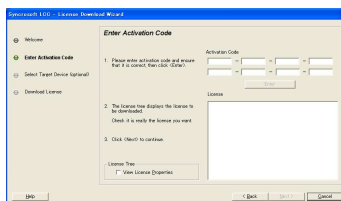


 The USB key must be installed separately for each USB port you use. If you connect the USB key to a USB port different than the one you used when installing the USB key, you will need to reinstall the USB key using the same procedure.

10 From the taskbar, click [Start] and then [All Programs]. From the menu, choose “Synchrosoft” - “Licence Control Center.”

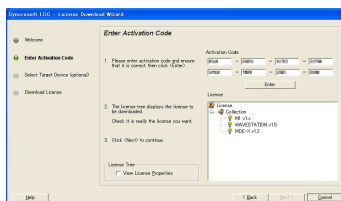
11 License Control Center will start up. From the “Wizards” menu, choose “License Download.” In the screen that appears, click [Next].

12 The “Enter Activation Code” screen will appear. In the [Activation Code] field, carefully enter the code you wrote down in step 7, and then click [Enter]. If you did not enter the code correctly, a dialog box informing you of that fact will appear. Click [OK], and enter the code again.




 Once you use an activation code, you cannot use it again.

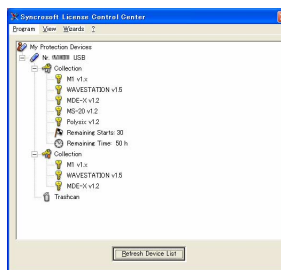
13 When you’ve entered the correct code, the screen shown at the right will appear. Verify that the [License] area shows the name of the KORG Legacy Collection - DIGITAL EDITION software, and click [Next].



14 The “Download License” screen will appear. Click [Start]. The license data will be downloaded to the USB key. Please wait until this has been completed. When the license data has been downloaded successfully, a dialog box will inform you of this. Click [OK].

15 Click [Finish]. This completes the installation. In the screen that appears, verify that the names of the KORG Legacy Collection - DIGITAL EDITION software are shown, and then exit the License Control Center.

 Demo licenses for all the software titles contained in the KORG Legacy Collection series have been pre-installed in the USB key. (By accessing the License Control Center, you can confirm the number of times and the total hours that each title may be used in Demo Mode before registration is required.) The software contained in the KORG Legacy Collection - DIGITAL EDITION cannot be launched once the limited number of times and total hours of Demo Mode use has been exceeded, until you download the license into the USB key according to the above-mentioned procedure.



Installation in Mac OS X

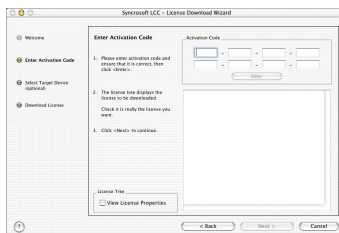
To install the software in Mac OS X, be sure that your computer is connected to the Internet and proceed as follows.

- 1 Insert the CD-ROM into the CD drive.
- 2 Double-click the KORG Legacy Collection - DIGITAL EDITION installer, and follow the on-screen instructions to proceed with the installation.
If you click [Customize], you'll be able to choose the program(s) you want to install.
- 3 When installation is completed, a dialog box will appear. Click [USB Key: Get Activation Code]. Your web browser will start up, and will access "KORG USER NET," a dedicated website for users.
- 4 When your web browser has finished accessing the "KORG USER NET" user website, a log-in screen will appear. If this is the first time you are registering as a user, click "New user." If you have already registered, type your e-mail address and password, and click "Register another product."
- 5 As directed by the on-screen instructions, enter your user information and product information. The e-mail address and password you use for user registration will be required when you log on to the Korg user website to download software updates. Be sure to write them down so that you won't forget them. In the "Product Code" field of the product information area, type the "Product Code" that's affixed to the CD-ROM case. You should carefully keep the Product Code that's affixed to the CD-ROM case, since you'll need it in order to receive support service.
- 6 When registration is complete, an activation code for your USB key will appear in the screen. Carefully write down this code. This activation code will also be sent to you via e-mail when registration is completed.
- 7 Close your web browser, return to the KORG Legacy Collection- DIGITAL EDITION installer window, and click [Restart] to restart your computer.
- 8 After your computer has restarted, connect the USB key to the USB port.
- 9 Navigate to the "Application" folder, and double-click "License Control Center."

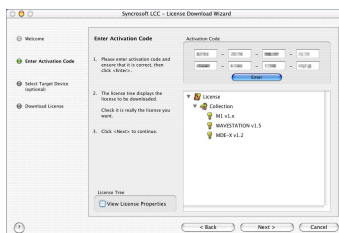


10 License Control Center will start up. From the “Wizards” menu, choose “License Download.” In the screen that appears, click [Next].

11 The “Enter Activation Code” screen will appear. In the [Activation Code] field, carefully enter the code you wrote down in step 6, and then click [Enter]. If you did not enter the code correctly, a dialog box informing you of that fact will appear. Click [OK], and enter the code again. Once you use an activation code, you cannot use it again.




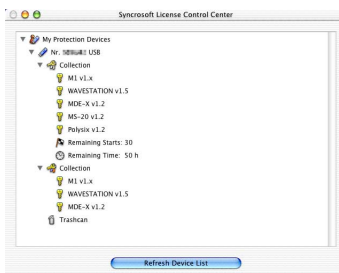
12 When you’ve entered the correct code, the screen shown at the right will appear. Verify that the [License] area shows the name of the KORGE Legacy Collection - DIGITAL EDITION software, and click [Next].



13 The “Download License” screen will appear. Click [Start]. The license data will be downloaded to the USB key. Please wait until this has been completed. When the license data has been downloaded successfully, a dialog box will inform you of this. Click [OK].

14 Click [Finish]. This completes the installation. In the screen that appears, verify that the names of the KORGE Legacy Collection - DIGITAL EDITION software are shown, and then exit the License Control Center.

 Demo licenses for all the software titles contained in the KORGE Legacy Collection series have been pre-installed in the USB key. (By accessing the License Control Center, you can confirm the number of times and the total hours that each title may be used in Demo Mode before registration is required.) The software contained in the KORGE Legacy Collection - DIGITAL EDITION cannot be launched once the limited number of times and total hours of Demo Mode use has been exceeded, until you download the license into the USB key according to the above-mentioned procedure



Cautions regarding the USB key

- If the KORG Legacy Collection - DIGITAL EDITION software will not start even though the USB key is connected, please check the following points.
 - If you're using a USB hub, try connecting the key directly to a USB port on the computer itself to see whether it will work. You can also try removing all other connected USB devices except for the key.
 - Download the most recent driver for the USB key. The most recent USB key drive can be downloaded from <http://www.syncrosoft.com/downloads>.
- If the USB key is damaged, a fee will be charged for repair. Be careful of handling.
- Don't connect the key to a USB port or hub that supplies a voltage higher than the 5 V specified by the USB specification. If you're using a powered USB hub, using the wrong AC adaptor may damage the USB key. If you're using a Mac, be aware that the USB port located on the rear of the Apple display may provide excessive voltage, so avoid connecting the USB key to that port.
- Korg provides no guarantee regarding a lost or stolen USB key. Keep the USB key safe, since you will have to purchase the product again if the key is lost or stolen.

The user website

Registered users of this product can access the users-only website. Software updates and program data can be downloaded from the KORG USER NET users-only website.

Accessing the users-only website

- 1 Start up your web browser, type "http://www.korguser.net" in the address bar, and connect to the Internet.
 - 2 The user website's log-in screen will appear. Type the e-mail address and password with which you registered.
- note** If you've forgotten your password, you can click "Forgot your password" to obtain the password you registered.

When you've typed the necessary information, click one of the items at the right. When log-in is completed, the page you selected will appear. Proceed as directed by the instructions in each page.

Setup

This chapter explains how to start up the stand-alone application after installation, and how to make preference settings so you can use it.

Starting up Stand-alone application

- 1 Use a USB cable to connect the external MIDI device to your computer.
- 2 Connect the USB-hardware key to your computer.
- 3 Navigate to the “KORG” folder - “KORG Legacy” folder, and double-click the software synthesizer icon to start up the program.

Windows

The KORG Legacy folder is in the location you specified when installing the software. By default, it will be in the “KORG” folder within the “Program Files” folder. Alternatively, you can click the [Start] button on the task bar, then “All Programs,” and start up the program by choosing from “KORG ” folder - “KORG Legacy” folder.

Mac

Navigate to the “Application” folder - “KORG” folder - “KORG Legacy” folder, and double-click software synthesizer icon to startup the program.

- 4 From the System menu, choose “Preference.”
The Preference dialog box “Audio Device” will appear. If “MIDI Setting” appears, click the “Audio Device” tab.

note The first time you start up the software, or if the preference settings have been cleared for some reason, or if your computer system has changed, the preference dialog box will appear automatically at start-up.

Audio settings


- 1 In “Driver type” or “Output Device,” select the type of audio driver you want to use.

Windows

ASIO: The ASIO driver will be used. ASIO drivers allow minimal latency, and will give you the best performance. If an ASIO driver is installed, we recommend that you use this setting.

DirectSound: DirectSound will be used. Use this setting if an ASIO driver is not installed in your computer.

MME: MME (Multi Media Extension) will be used.

-  Since MME has higher latency than other settings, we recommend that you use another setting if possible.

Mac


If audio interface is installed in your computer, you will be able to select the driver for that audio interface.

If audio interface is not installed, you will only be able to select “**Built-in audio controller.**”

- 2 Specify the audio output.

Windows

- If you selected ASIO in “Driver type”

-  This will be unavailable and cannot be selected if an ASIO driver is not installed in your computer.

“Driver”

Select the driver (device) you will use.

“Sampling Rate”

Select the sampling rate you will use. The choices for “Sampling rate” will depend on the device you select for “Driver.”

“Out Channel”

Select the output channels. This setting will always be a pair such as 1-2 or 3-4. The choices will depend on the device you select for “Driver.”

“Clock Source”

Select the audio clock source that you will use. The choices will depend on the device you select for “Driver.”

“ASIO Control Panel”

Click this to open the ASIO driver settings panel.

The contents and operation in this panel will depend on the driver you are using. For details, refer to the owner’s manual for your audio interface.

- If you select DirectSound or MME as the “Driver type”

“In Driver”

Select the driver (device) you will use.

-  In some cases, the same driver may appear more than once. Select one of them.

“Bit/Smpl Rate/Ch”

Select the audio format you will use. The choices will depend on the device you select for “Input driver.”

“Buffer Size”

Specify the number of audio processing buffers. Higher settings will make operation more stable, but latency will be higher. Latency is the time from when the computer receives a note-on message until sound is produced. Latency is determined by “the number of samples” x “the number of buffers.” You should set the buffer size and the sample size in a way that minimizes latency while preserving stable operation.

“Sample Size”

Specify the number of samples in one buffer. Higher settings will make operation more stable, but latency will be higher.

Mac

“Bits/Rate/Channel”

Select the audio format you will use. The choices will depend on the device you selected as the “Output Device.”

“Output Channel”

If you selected “**Built-in audio controller**” as the “Output Device,” the only available setting will be **Output 1/Output 2**. If audio interface is installed in your computer, you will have other choices.

“Buffer Size”

Specify the size of the audio processing buffer. Higher settings will make operation more stable, but latency will be higher.

“Latency”


This indicates the latency. The latency will depend on the “Buffer Size” setting. Latency is the time from when the computer receives a note-on message until sound is produced. Latency is determined by “the number of samples” x “the number of buffers.” You should set the buffer size in a way that minimizes latency while preserving stable operation.

note The “Latency” value is determined by the buffer size. You should set “Buffer Size” to the lowest setting for which operation is stable.

note For details on how to make settings for your audio interface, refer to the owner’s manual for your audio interface.

MIDI settings

- 1 Click the “MIDI Setting” tab.
The various port settings will appear.
- 2 For MIDI IN devices 1, 2, and 3, select the device that you will use for each port.
You can use up to three MIDI IN devices simultaneously. Normally, the input from these devices will all be merged. If a multi-port device is connected, this screen may show two or more ports on the same device.
- 3 In the “Clock Master” field, select the device that will be the MIDI clock master.
If you don’t select a device, the internal clock will always be used. When the software instrument is operating as a plug-in, the clock of the host application will always be used.

 If the device you want to use does not appear in the selection for each port, check the following points.

Win: Is the connected device driver installed?

Mac: Is the connected device detected in your computer?

Mac: If the device you want to use does not appear in the selection for each port, navigate to the Application folder → Utility → “Audio MIDI Setup,” display the “MIDI device” tab page, and check whether the connected external MIDI device has been detected.

Other settings

- 1 Click the “Other” tab.
A dialog box with settings for operation (Knob Mode) and automatic stopping will appear.

- 2 In the Control area, set “Knob Mode” to specify how you want the knobs to operate.

Circular

Edit values by moving the mouse pointer to the mark indicating a knob’s value, and dragging to turn the knob. You can also move the knob immediately by directly clicking the desired position.

Relative Circular


Edit values by dragging as if to turn the knob to the desired position. You will not be able to move the knob by clicking as with the “Circular” setting above.


Linear

Edit values by dragging the knob upward or downward.

- 3 In the AutoStop Setting area, specify if and when you want the audio to stop automatically.

The Auto Stop function automatically stops the audio depending on the CPU load of your computer. (The result is the same as when you execute the “System” menu command “Stop Audio.”) If you want to use the Auto Stop function, check the “Enable AutoStop” check box, and use the “AutoStop Rate” slider to specify the load threshold at which the audio will be stopped. If the CPU load exceeds this threshold during operation, the audio will stop. If the audio has been stopped automatically, use the “System” menu command “Play audio” to resume playing.

-  If audio stops frequently, try lightening the load on the CPU by reducing the polyphony of the synthesizer(s).

-  If you don’t use the Auto Stop function, the system will attempt to continue producing audio as long as possible. However, depending on the hardware you are using, you may experience problems such as the mouse becoming unresponsive when the audio load is high.

- 4 Click “OK” to finalize the preference settings.

Support

If you have questions about this product, please contact the Korg distributor for the country in which you purchased it. You can find your local distributor at http://www.korguser.net/distributors_list.htm

In order to receive product support, you must have completed the product registration. Please understand that product support will not be provided if your registration cannot be verified.

When Requesting Support


You will need to provide the following information when requesting support.


- Your name and e-mail address (they must be the same name and e-mail address you used when registering)
- The Product code of your product (affixed to the CD-ROM case)
- The name and version of your product (shown in the “About” window of the software)

The following information is required to enable us to help you quickly and efficiently. Please have it available before you contact us for support:

- Your computer system
Manufacturer and model of your computer:
CPU model and clock speed:
Amount of installed memory:
Total and remaining space on installed hard disk:
Operating system and version:
Audio interface model name and driver version:
Other peripherals connected to your computer:

- Your question (please be as specific as possible)

 Before you request support, please check whether your question has been answered in the KORG Legacy Collection Owner’s Manual or in the “Users website FAQ”.

 We are sorry, but time does not permit us to answer questions on basic computer operation, on the basics of setting up your computer for music production, on how to create songs or sounds, or regarding products not manufactured by Korg.

Syncrosoft GmbH MODEL: USB KeyTested To Comply
With FCC Standards**FOR HOME OR OFFICE USE**

This device complies with Part 15 of the FCC Rules. Operation is subject to the following two conditions: (1) This device may not cause harmful interference, and (2) this device must accept any interference received, including interference that may cause undesired operation.

Complies with Canadian ICES-003 Class B.

Conforme au Reglement Canadian NMB-003 classe B.

THE FCC REGULATION WARNING (for U.S.A.)

This equipment has been tested and found to comply with the limits for a Class B digital device, pursuant to Part 15 of the FCC Rules. These limits are designed to provide reasonable protection against harmful interference in a residential installation. This equipment generates, uses, and can radiate radio frequency energy and, if not installed and used in accordance with the instructions, may cause harmful interference to radio communications. However, there is no guarantee that interference will not occur in a particular installation. If this equipment does cause harmful interference to radio or television reception, which can be determined by turning the equipment off and on, the user is encouraged to try to correct the interference by one or more of the following measures:

- Reorient or relocate the receiving antenna.
- Increase the separation between the equipment and receiver.
- Connect the equipment into an outlet on a circuit different from that to which the receiver is connected.
- Consult the dealer or an experienced radio/TV technician for help.

Unauthorized changes or modification to this system can void the user's authority to operate this equipment.

CE mark for European Harmonized Standards

CE mark which is attached to our company's products of AC mains operated apparatus until December 31, 1996 means it conforms to EMC Directive (89/336/EEC) and CE mark Directive (93/68/EEC). And, CE mark which is attached after January 1, 1997 means it conforms to EMC Directive (89/336/EEC), CE mark Directive (93/68/EEC) and Low Voltage Directive (73/23/EEC). Also, CE mark which is attached to our company's products of Battery operated apparatus means it conforms to EMC Directive (89/336/EEC) and CE mark Directive (93/68/EEC).

IMPORTANT NOTICE TO CONSUMERS

This product has been manufactured according to strict specifications and voltage requirements that are applicable in the country in which it is intended that this product should be used. If you have purchased this product via the internet, through mail order, and/or via a telephone sale, you must verify that this product is intended to be used in the country in which you reside.

WARNING: Use of this product in any country other than that for which it is intended could be dangerous and could invalidate the manufacturer's or distributor's warranty.

Please also retain your receipt as proof of purchase otherwise your product may be disqualified from the manufacturer's or distributor's warranty.

KORG KORG INC.

4015-2 Yanokuchi, Inagi-city, Tokyo 206-0812 Japan