

# KORG Legacy Collection

Virtual Instruments/Effects Plug-ins



## KORG Legacy Collection Installation guide

# KORG

- Apple, the Apple logo and Mac are trademarks of Apple Computer, Inc., registered in the U.S. and other countries.
- The “Built for Mac OS X” graphic and the Optimized for G4 with Velocity Engine graphic are trademarks of Apple Computer, Inc., used under license.
- The Audio Units logo and the Audio Units symbol are trademarks of Apple Computer, Inc.
- Windows XP is a registered trademark of Microsoft Corporation in the U.S. and other countries.
- VST and ASIO are trademarks of Steinberg Media Technologies GmbH.
- All other product and company names are trademarks or registered trademarks of their respective holders.
- All specifications are subject to change without notice. All rights reserved.

# Table of Contents

<b>Contents of the package</b> .....	<b>4</b>
<b>Note</b> .....	<b>4</b>
<b>Operating requirements</b> .....	<b>5</b>
● Windows.....	5
● Macintosh.....	6
<b>Applications and plug-ins installed</b> .....	<b>7</b>
Stand-alone applications.....	7
Plug-in instruments .....	7
Plug-in effects .....	7
<b>Installation in Windows XP</b> .....	<b>8</b>
Installing the KORG Legacy Collection.....	8
<b>Installation in Mac OS X</b> .....	<b>12</b>
Installing the KORG Legacy Collection.....	12
<b>Activating your software license</b> .....	<b>15</b>
Obtaining your license code.....	15
If you want to obtain your license code via a computer other than the computer on which you've installed the KORG Legacy Collection....	18
The users-only website.....	21
<b>Troubleshooting</b> .....	<b>22</b>
<b>Support</b> .....	<b>23</b>

# Contents of the package

The KORG Legacy Collection software contains the following items. Immediately after opening the package, please make sure that all of these items are present. If any are missing, please contact the dealer from whom you purchased the product.

- CD-ROM (contains KORG Legacy Collection, KORG USB-MIDI Driver for Windows XP, and owner's manuals PDF)**
- KORG Legacy Collection Installation Guide**
- KORG Legacy Collection MS-20/Polysix/Legacy Cell Owner's Manual**
- KORG Legacy Collection WAVESTATION Owner's Manual**
- Software License Agreement**

## Note

- All copyrights to the software of this product are the property of Korg Corporation.
- A software license agreement for the accompanying is included with this product. You must read this license agreement before installing the software. Installing the software will be taken to mean your acceptance of this license agreement.

# Operating requirements


## ● Windows

### Computer

**CPU:** Intel Pentium 4/1.5 GHz, Pentium M (Centrino)/1.3 GHz, Celeron/1.8 GHz, AMD AthlonXP/2000+ or better

**Memory:** 256 MB or more. 512 MB or more is recommended.

**Screen:** 1024 × 768 pixel, 16-bit color or better

 In order to install this product, your computer must have a CD-ROM drive, at least 150 MB of free space on your hard disk, and a USB port for using the external MIDI device.


### Operating system


Windows XP Home Edition or Professional, Service Pack 1 or later


### Audio interface

**Stand-alone:** an audio interface that supports ASIO

**Plug-in:** a system that meets the requirements of the host application you are using

 If you intend to play software synthesizers in realtime, you will need a low-latency interface.

 In order to use this software as a plug-in, you will need a VST-compatible host application.

 The method of copy protection used by this software requires you to register and activate the product before you can use it. In order to use this product, you must verify your license via the Internet using a web browser (this process includes product registration and user registration). The computer you use to perform this process can be a different computer than the one on which this software is installed.


# ● Macintosh

## Computer

**CPU:** Apple G4/800 MHz or better, G4/1.25 GHz or better is recommended (Legacy Cell includes preset programs that require G4/1.25 MHz or better CPU)

**Memory:** 256 MB or more. 512 MB or more is recommended.

**Screen:** 1024 × 768 pixel, 32000 colors or better

 In order to install this product, your computer must have a CD-ROM drive and at least 150 MB of free space on your hard disk.


## Operating system


Mac OS X v.10.2.6 or later

## Audio interface

**Stand-alone:** an audio interface that supports Core Audio (the Macintosh's internal sound input/output functionality can also be used)

**Plug-in:** a system that meets the requirements of the host application you are using

 If you intend to play software synthesizers in realtime, you will need a low-latency interface.

 In order to use this software as a plug-in, you will need a host application that supports VST or Audio Units.

# Applications and plug-ins installed

The KORG Legacy Collection installs the following software.

## Stand-alone applications



### MS-20

MS-20 software synthesizer



### Polysix

Polysix software synthesizer



### Legacy Cell

Legacy Cell software synthesizer




### WAVESTATION

WAVESTATION software synthesizer

## Plug-in instruments

### MS-20

MS-20 software synthesizer plug-in

 You cannot input an audio signal to the ESP (External Signal Processor) of the MS-20 software synthesizer plug-in (see “Plug-in effects” below).

### Polysix

Polysix software synthesizer plug-in

### Legacy Cell

Legacy Cell software synthesizer plug-in


### WAVESTATION

WAVESTATION software synthesizer plug-in

## Plug-in effects

### MS-20FX

An plug-in effect that lets you send an audio signal through the MS-20's ESP (External Signal Processor).

 Depending on your host application, you may also be able to play the synthesizer via MIDI.

### MDE-X

An plug-in effect that lets you select nineteen types of effect provided by Legacy Cell.

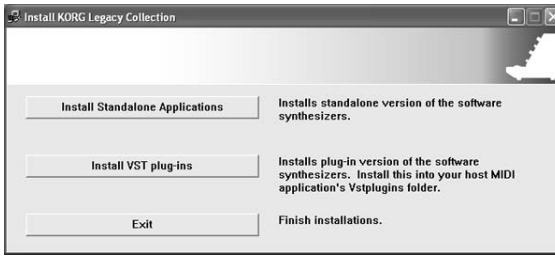
# Installation in Windows XP

## Installing the KORG Legacy Collection

Here's how to install the software into Windows XP.

### Installing the Stand-alone applications

- 1 Insert the CD into the CD-ROM drive.  
Normally, the installer will start up automatically, and the “Install KORG Legacy Collection” dialog box will appear.  
If you have disabled auto-run for your CD-ROM drive, navigate to the CD-ROM and double-click “Setup.exe”.



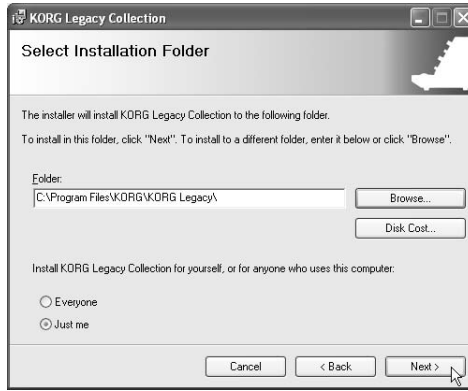
- 2 Click [Install Standalone Applications].  
The following screen will appear. Click [Next>].



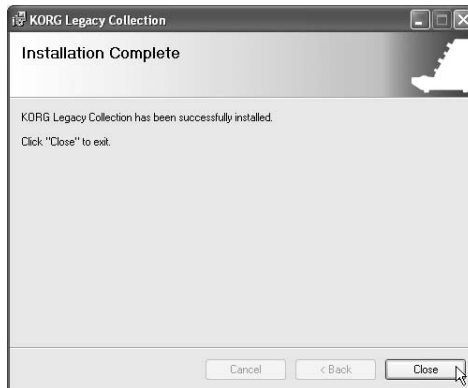
- 3 The “Welcome to the KORG Legacy Collection Setup Wizard” will appear.  
Click [Next>].



- 4 The “KORG Legacy Collection Information” screen will appear. Read the contents, and click [Next>].
- 5 The “License Agreement” will appear. Carefully read the contents, and if you accept the terms, click [I Agree] and then [Next>].
- 6 The “Select Installation Folder” screen will appear. Select the folder into which you want to install the software, choose the users who will be able to use the software, and click [Next>].



- 7 The “Confirm Installation” screen will appear. To install the software, click [Next>]. Installation will begin.
- 8 If installation was successful, the following screen will appear. Click [Close].



Next the VST plug-in versions of the software will be installed. If you don't want to install the VST plug-ins, click [End Installation] in the “Install KORG Legacy Collection” window to end the installation.

### About the copy protection

This software product uses a license-verification method of copy protection. In order to use this product, you must verify your license via the Internet and obtain a “license code” that will activate the software.

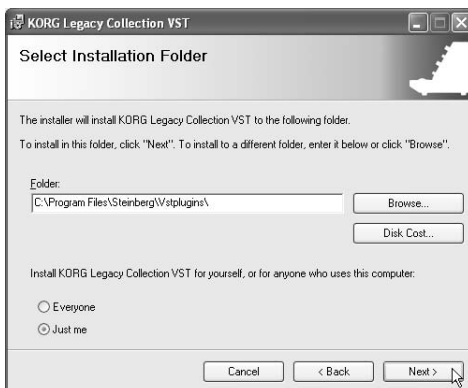
After installing the software, obtain the license code and activate the software as described in “Activating your software license” (p. 15).

### Installing the VST plug-ins

- 1 In the “Install KORG Legacy Collection” screen that appears at the beginning of the installation process, click [Install VST plug-ins]. The following screen will appear. Click [Next>].

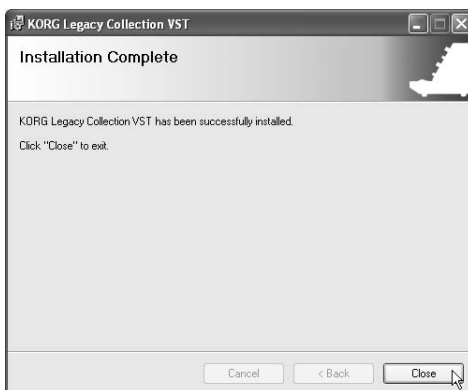


- 2 The “Welcome to the KORG Legacy Collection VST Setup Wizard” will appear. Click [Next>].
- 3 The “KORG Legacy Collection VST Information” screen will appear. Verify the contents, and click [Next>].
- 4 The “License Agreement” will appear. Carefully read the contents, and if you accept the terms, click [I Agree] and then [Next>].
- 5 The “Select Installation Folder” screen will appear. Select the folder into which you want to install the software, choose the users who will be able to use the software, and click [Next>].



The installation folder will depend on your host application for which you want to install the plug-ins. Refer to the owner’s manual of your host application.

- 6 The “Confirm Installation” screen will appear. To install the software, click [Next>]. Installation will begin.
- 7 If installation was successful, the following screen will appear. Click [Close].



- 8 In “Install KORG Legacy Collection,” click [End Installation] to end the installation.

### About the copy protection

This software product uses a license-verification method of copy protection. In order to use this product, you must verify your license via the Internet and obtain a “license code” that will activate the software.

After installing the software, obtain the license code and activate the software as described in “Activating your software license” (p. 15).

# Installation in Mac OS X

## Installing the KORG Legacy Collection

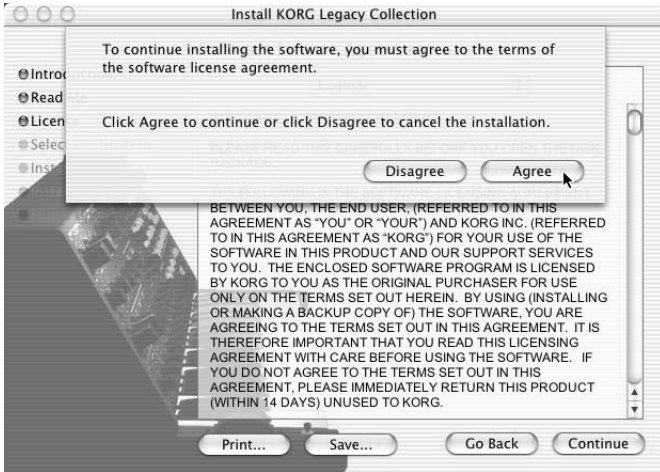
Here's how to install the software into Mac OS X.

- 1 Insert the CD into the CD-ROM drive.
- 2 In the CD-ROM, double-click “KORG Legacy Installer.pkg” to start up the installer.
- 3 If a verification dialog box appears, input your password and click [OK]. When the installer starts up, the following screen will appear. Click [Continue].



- 4 The “Important Information” screen will appear. Read the contents, and click [Continue].

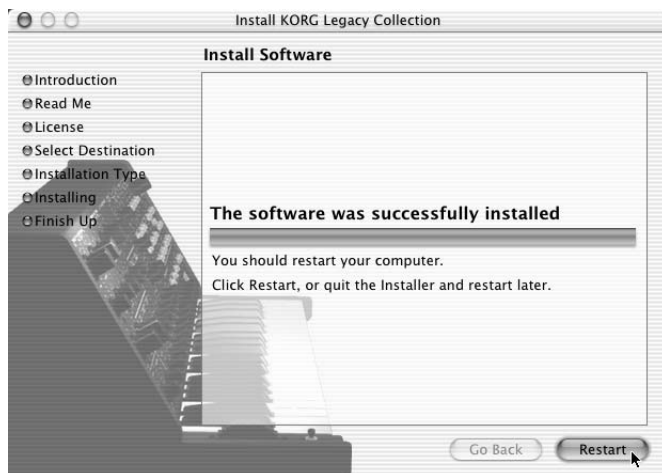
- 5 The “Software License Agreement” will appear. Carefully read the contents, and click [Continue]. A dialog box will appear. If you accept the terms of the software license agreement, click [Agree].



- 6 The “Select Installation Folder” screen will appear. Select the folder into which you want to install the software, and click [Continue].
- 7 The “Easy Install” screen will appear. Click [Install].
- 8 A dialog box will appear, informing you that you will need to restart your computer when installation is completed. When you click [Continue Installation], installation will begin.



- 9 If installation was successful, the following screen will appear. Click [Restart].



**note** When installing to Mac OS X, the plug-ins will be installed to the appropriate folder when you install the KORG Legacy Collection.

### About the copy protection

This software product uses a license-verification method of copy protection. In order to use this product, you must verify your license via the Internet and obtain a “license code” that will activate the software.

After installing the software, obtain the license code and activate the software as described in “Activating your software license” (p. 15).

# Activating your software license

In order to use the KORGE Legacy Collection, you must activate your software license via the Internet, and obtain a "license code." The procedure is described below.

- ⚡ The computer you use to activate your license must have one of the following operating systems and web browser.

**OS:** Windows XP Home Edition/Professional SP1 or Mac OS X v.10.2.6 or later

**Web browser:**

Windows: Microsoft Internet Explorer 5.5 or later

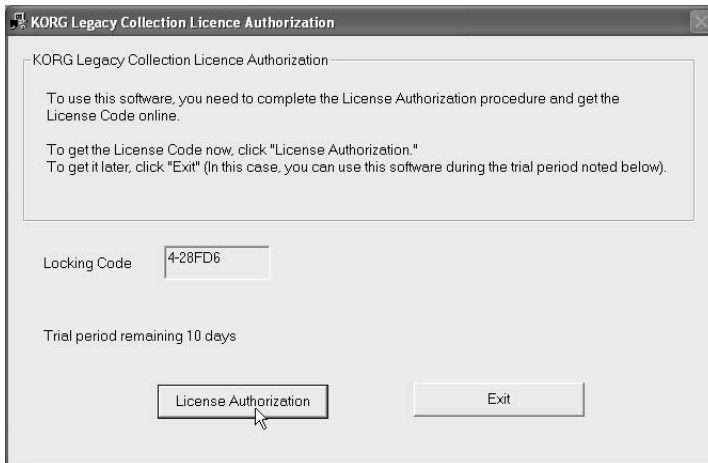
Mac: Microsoft Internet Explorer 5.2 or later

You will need to make any necessary settings and establish your Internet connection before activating the software.

- ⚡ Screen shots from Windows are used in the explanation that follows. The displayed screens are essentially the same in Mac OS X.

## Obtaining your license code

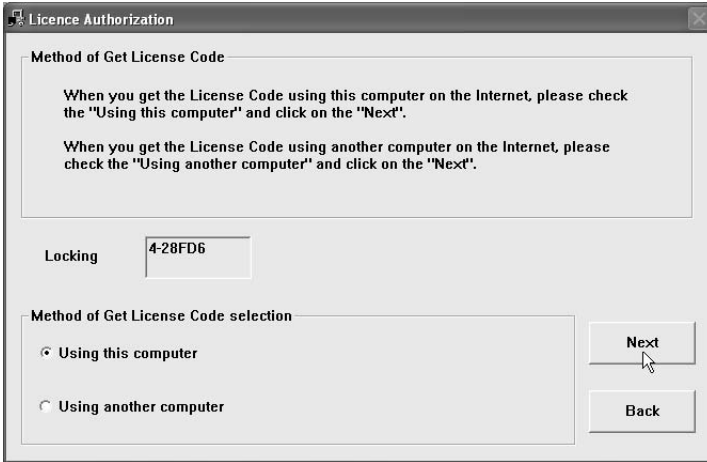
- 1 When you start up any software in the KORGE Legacy Collection, the following screen will appear. Click [Licence Authorization].



**note** If you don't want to activate your license right now, click the [Exit]. You will be able to use the KORGE Legacy Collection for a period of ten days after installation even without obtaining a license code. (Once this period has expired, none of the KORGE Legacy Collection can be started up.)

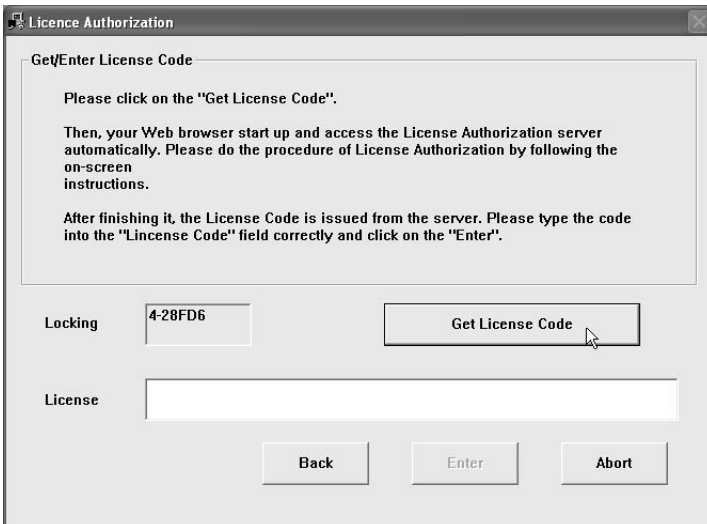
**note** Until you perform the license verification procedure and obtain a license code to unlock the copy protection, this screen will appear each time you start up the KORGE Legacy Collection.

2 The following screen will appear. Make sure that “Using this computer” is checked, and click the [Next].



**note** If necessary, you can obtain your license code using a different computer than the computer in which the KORGE Legacy Collection is installed. (p. 19)

3 Next the following screen will appear. Click the [Get License Code].





**note** In these screens, you can click the [Back] to return to the previous screen, or click the [Cancel] to cancel the license activation procedure.

**4** Your web browser will start up automatically, connect to the Internet, and access the license verification server. After the license verification server has been accessed, the log-in page of the users-only website will appear. If you are registering as a user for the first time, click [New registration]. If you have already registered, enter your e-mail address and password, and click [Register another product].

**5** In the screen that appears, input your user information as requested.

**note** In order to log in to the users-only website to download updates and other data, you will need to use the e-mail address and password you register here. Write down your address and password so you don't forget them.

When you've finished inputting your information, click the [Next].

**6** A screen will appear in which you can input the authorization code of the product you purchased. Type in the information requested. In the "Authorization Code" field, type the authorization code affixed to the CD-ROM case of the KORGLegacy Collection. The "Locking Code" field automatically displays a code for the computer for which you are obtaining a license code.

When you've finished inputting the information, click the [Next].

**note** In order to obtain support, you will need the "Authorization Code" that is affixed to the CD-ROM case, so be sure to keep it in a safe place.

**7** When the license activation process is completed, a screen will appear, showing the license code that has been issued for your computer. Carefully write down the license code exactly as it appears. Click the [Close] to close your web browser.


**note** You can also input the license code by copying and pasting it.

**note** Your license code will also be sent to you via the e-mail address you provided.

**8** The screen you saw in step 3 will appear. Carefully type in the license code you wrote down in step 7, and click the [Enter].

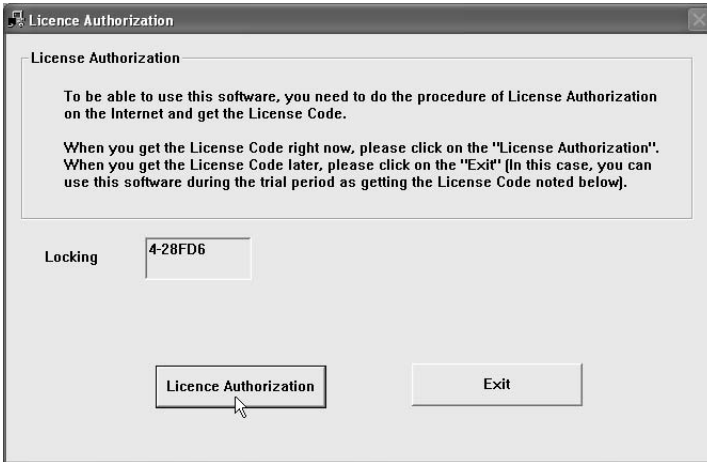
**9** When the license code has been verified, a screen will appear, indicating that activation is complete. Click the [OK] to close the license activation window.

**note** If you change the computer on which you use the KORGLegacy Collection, you'll need to obtain a new license code. Type your e-mail address and password in the log-in page of the users-only website, click "Obtain new license code" to log-in, and follow the on-screen directions.

 Your license allows you personally to use the KORG Legacy Collection on only one computer.

## If you want to obtain your license code via a computer other than the computer on which you've installed the KORG Legacy Collection

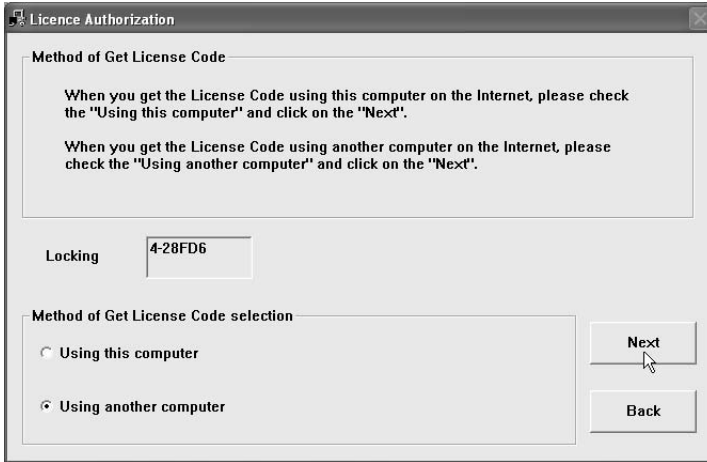
- 1 When you start up any software in the KORG Legacy Collection, the following screen will appear. Click [Licence Authorization].



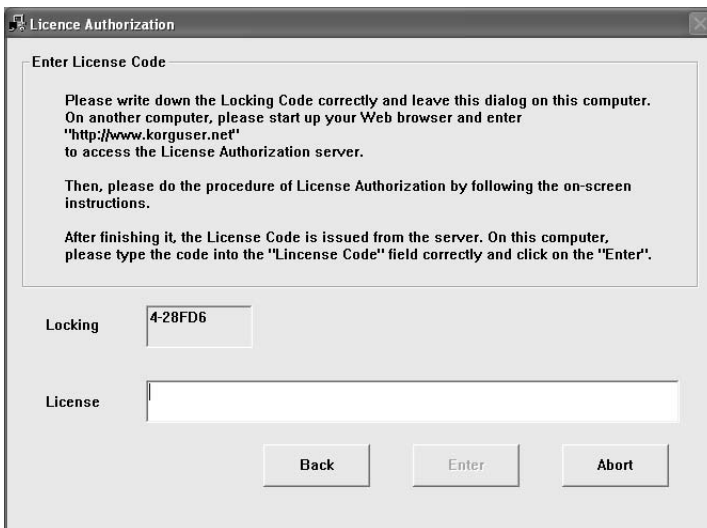
**note** If you don't want to activate your license right now, click the [Exit]. You will be able to use the KORG Legacy Collection for a period of ten days after installation even without obtaining a license code. (Once this period has expired, none of the KORG Legacy Collection can be started up.)

**note** Until you perform the license verification procedure and obtain a license code to unlock the copy protection, this screen will appear each time you start up the KORG Legacy Collection.

- 2 The following screen will appear. Check “Using another computer,” and then click the [Next].



- 3 Next the following screen will appear. The character string shown in “Locking Code” is the code for your computer. You will be obtaining a license code for this locking code. Carefully write down this code exactly as it appears. Leave this screen displayed on this computer.



**note** In these screens, you can click the [Back] to return to the previous screen, or click the [Cancel] to cancel the license activation procedure.

- 4 Start up your web browser on another computer that has an Internet connection. In the address field of your web browser, type “http://www.korguser.net” and connect to the Internet to access the license verification server.
- 5 After the license verification server has been accessed, the log-in page of the users-only website will appear. If you are registering as a user for the first time, click [New registration]. If you have already registered, enter your e-mail address and password, and click [Register another product].

- 6 In the screen that appears, input your user information as requested.

**note** In order to log in to the users-only website to download updates and other data, you will need to use the e-mail address and password you register here. Write down your address and password so you don't forget them.

When you've finished inputting your information, click the [Next].

- 7 A screen will appear in which you can input the authorization code of the product you purchased, and the locking code for the computer on which you are using the software.

In the “Authorization Code” field, type the authorization code affixed to the CD-ROM case of the KORG Legacy Collection. In the “Locking Code” field, type the code that you wrote down in step 3.

When you've finished inputting the information, click the [Next].

**note** In order to obtain support, you will need the “Authorization Code” that is affixed to the CD-ROM case, so be sure to keep it in a safe place.


- 8 When the license activation process is completed, a screen will appear, showing the license code that has been issued for your computer. Carefully write down the license code exactly as it appears. Click the [Close] to close your web browser.

**note** Your license code will also be sent to you via the e-mail address you provided.

- 9 In the screen you left open on your computer in step 3, carefully type in the license code you wrote down in step 8, and click the [Enter].

- 10 When the license code has been verified, a screen will appear, indicating that activation is complete. Click the [OK] to close the license activation window.

**note** If you change the computer on which you use the KORG Legacy Collection, you'll need to obtain a new license code. Type your e-mail address and password in the log-in page of the users-only website, click “Obtain new license code” to log-in, and follow the on-screen directions.

-  Your license allows you personally to use the KORG Legacy Collection on only one computer.

## The users-only website

Users who have obtained a license code for their KORG Legacy Collection can access the users-only website. The users-only website lets you download software updates and program data, and also lets you obtain a new license code in the event that you change computers.

### Accessing the users-only website

- 1 Start up your web browser, type “http://www.korguser.net” in the address field, and connect to the Internet.
- 2 The log-in page of the users-only website will appear. Input the e-mail address and password you obtained when you activated your software license.

**note** If you’ve forgotten your password, you can click “Check Password” to be reminded of your password.

When you’ve finished logging-in, you can click one of the items shown at the right.

#### **Register another product**

Here you can register and obtain a license code for a newly-purchased Korg product.

#### **Obtain a new license code**

If you change the computer on which you are using the KORG Legacy Collection, you can obtain a new license code in this page.

#### **Update user information**

In this page you can update the user information that you provided during registration, such as your address and e-mail address.

#### **Download**

This page provides downloads such as software updates and program data.

#### **FAQ**

This page provides a FAQ (Frequently Asked Questions) for the KORG Legacy Collection.

This information is current as of March 2004

When you’ve finished logging-in, the selected page will appear. Proceed as directed by the instructions in each page.

# Troubleshooting

Please check the following points before you suspect a malfunction.

## Can't install

- Is the CD-ROM inserted in your CD drive?  
Make sure that the CD-ROM is inserted correctly.
- Could the lens of your CD drive be dirty?  
Use a commercially-available lens cleaner to clean it.
- Is there sufficient space on your hard disk?  
If necessary, delete unneeded files to increase the amount of free space.
- {Windows XP} Are you installing the software as a user with administrative privileges (e.g., Administrator)?  
If you are using Windows XP, you must log on as a user who has administrative privileges (e.g., Administrator) in order to install the included software.  
The installed software can be used only by the user who installed it.
- Was other software running when you performed the installation?  
This software may not be installed correctly if other software is running during the installation. Close all software other than Windows itself, and perform the installation again.

# Support

If you have questions about this product, please contact the Korg distributor for the country in which you purchased it. You can find your local distributor at [http://www.korguser.net/distributors\\_list.htm](http://www.korguser.net/distributors_list.htm)



In order to receive product support, you must first activate your license for this product, and complete the User and Product registrations. Information on completing the User and Product registrations can be found in the Owner's Manual. Please understand that product support will not be provided if your registration cannot be verified.

## When Requesting Support

You will need to provide the following information when requesting support.

- Your name and e-mail address (they must be the same name and e-mail address you used when registering)
- The authorization code of your product (affixed to the KORG Legacy Collection CD-ROM case)
- The name and version of your product (shown in the “About” window of the software)

The following information is required to enable us to help you quickly and efficiently. Please have it available before you contact us for support:

- Your computer system
  - Manufacturer and model of your computer:
  - CPU model and clock speed:
  - Amount of installed memory:
  - Total and remaining space on installed hard disk:
  - Operating system and version:
  - Audio interface model name and driver version:
  - Other peripherals connected to your computer:
- Your question (please be as specific as possible)
-  Before you request support, please check whether your question has been answered in the KORG Legacy Collection Owner's Manual or in the “Users website FAQ”.
-  We are sorry, but time does not permit us to answer questions on basic computer operation, on the basics of setting up your computer for music production, on how to create songs or sounds, or regarding products not manufactured by Korg.

**IMPORTANT NOTICE TO CONSUMERS**

This product has been manufactured according to strict specifications and voltage requirements that are applicable in the country in which it is intended that this product should be used. If you have purchased this product via the internet, through mail order, and/or via a telephone sale, you must verify that this product is intended to be used in the country in which you reside.

**WARNING:** Use of this product in any country other than that for which it is intended could be dangerous and could invalidate the manufacturer's or distributor's warranty.

Please also retain your receipt as proof of purchase otherwise your product may be disqualified from the manufacturer's or distributor's warranty.

**KORG** KORG INC.

4015-2 Yanokuchi, Inagi-city, Tokyo 206-0812 Japan